

V1.1

3DMAKERPRO



RayStudio

IOS

MANUAL

| Software Installation

Operating System
Requirement

Installation and Up-
dates

| Scanner and Cellphone Connection

| Scan

Download latest **RayStudio** from

<https://forum.jimumeta.com/home/help/download.html>



Software Installation

Operating System Requirement

iOS

The app requires iOS 15.0 or later. it's recommended to use iphone 12 or a higher upgrade.

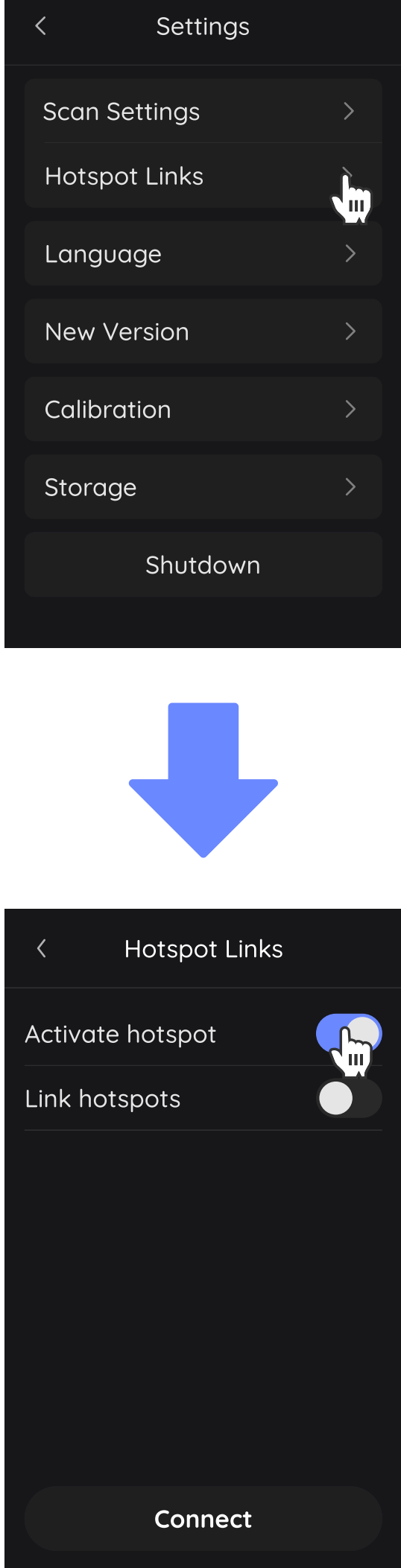
Installation and Updates

You can search RayStudioMobile in app store or visit JMMeta to download the app. Please make sure you're using the latest version so that we can serve you better.

Scanner and Cellphone Connection

After the device activates the hotspot, the mobile phone connects to the device WiFi, and finds the device in the software to connect, and then you can control the device through the mobile phone. Here's how

①To enable Activate hotspot on the air scanning device:

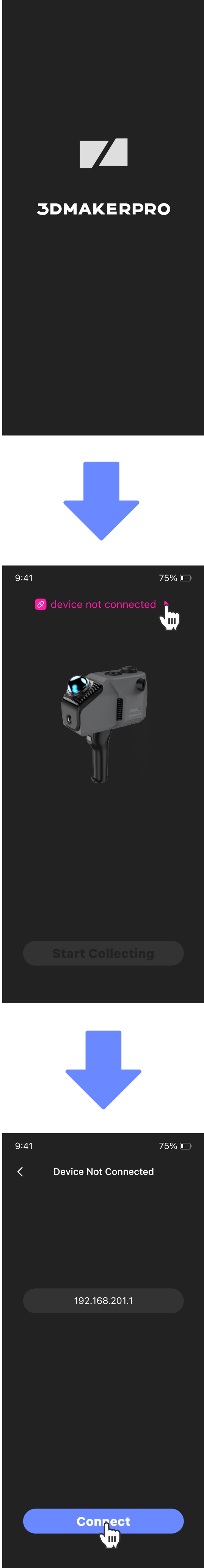


②Turn on the mobile network connection, find the device WIFI, and connect.

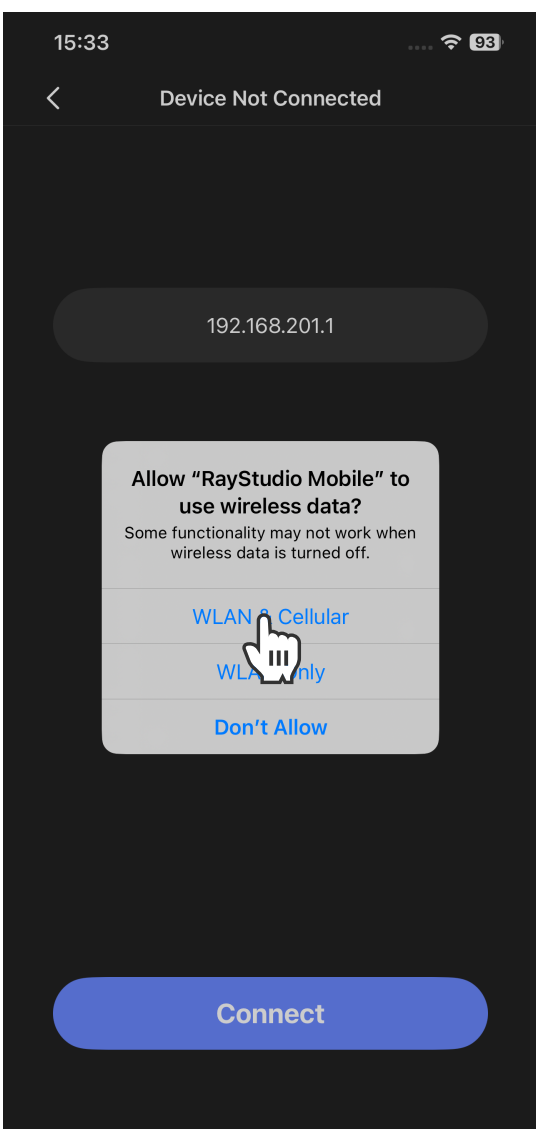
WIFI name: Rayzoom G100

Password: 12345678

③On the home page of the software, enter the connection interface and click Connect. After the connection is successful, the information about the device will be displayed:



(Optional) ④ For the first connection, authorization is required.



⑤After the connection is successful, you can scan.

First scan after scanner reboot

If the system does not align the time, the button will be grayed out, and the mobile terminal will automatically refresh the button after the timing is completed on the device.



Subsequent scan after scanner reboot

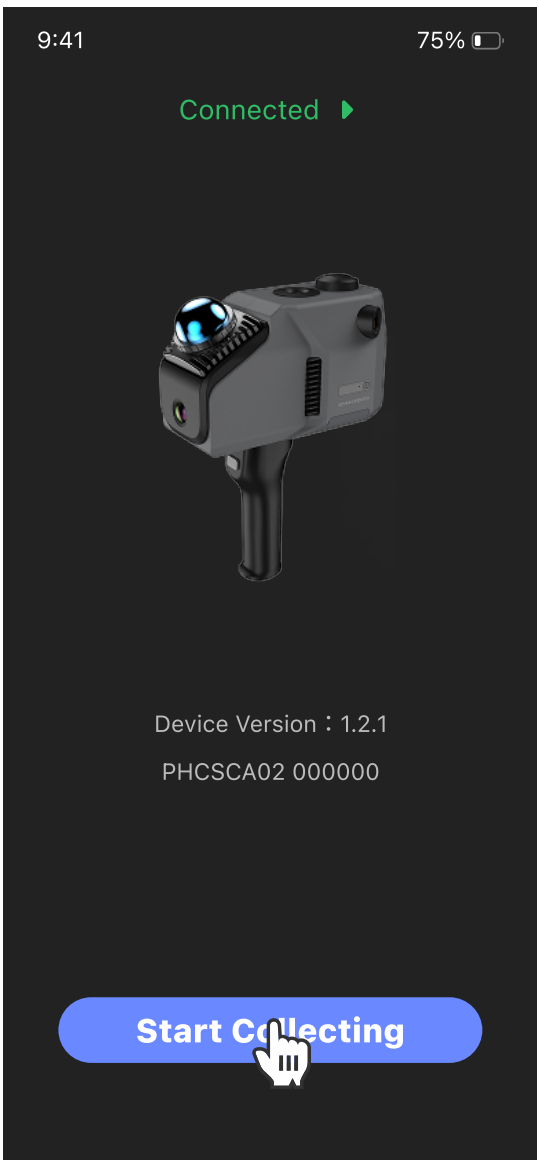
When the system has been checked, the scan button can be directly controlled on the mobile terminal.



Scan

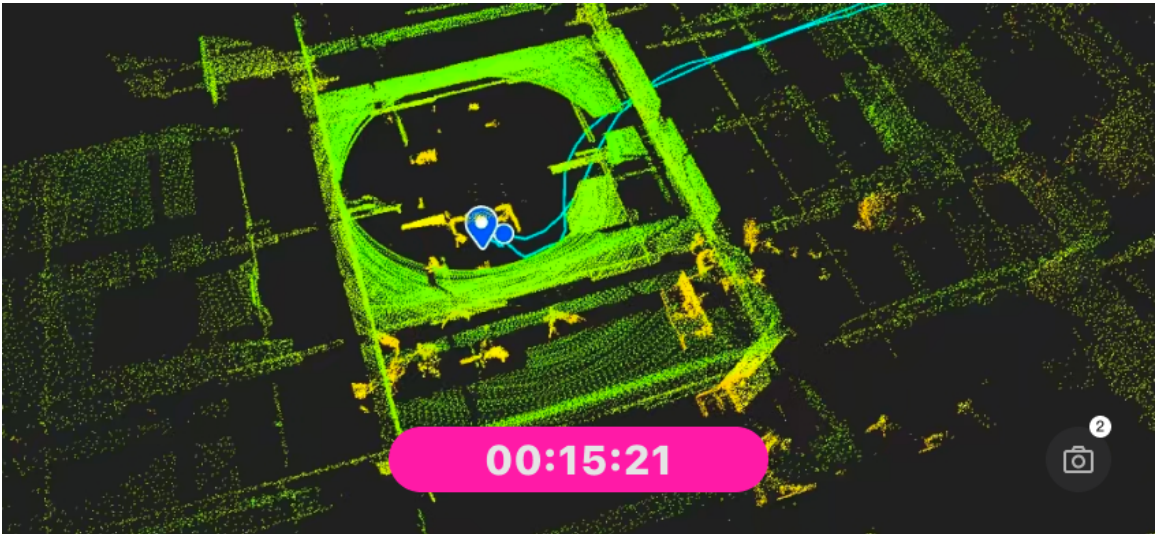
After the device completes the time alignment, you can control the scanning and ending of the device and take photos in fixed-point mode through your mobile phone. Here's how

①Click Start Scan:



②View the current scan status

In fixed-point capture mode, tap 📷 in the lower right corner to take a photo.



③Tap the timer to end scanning

