

# Creality Otter Lite First Scan Guide

## Product introduction

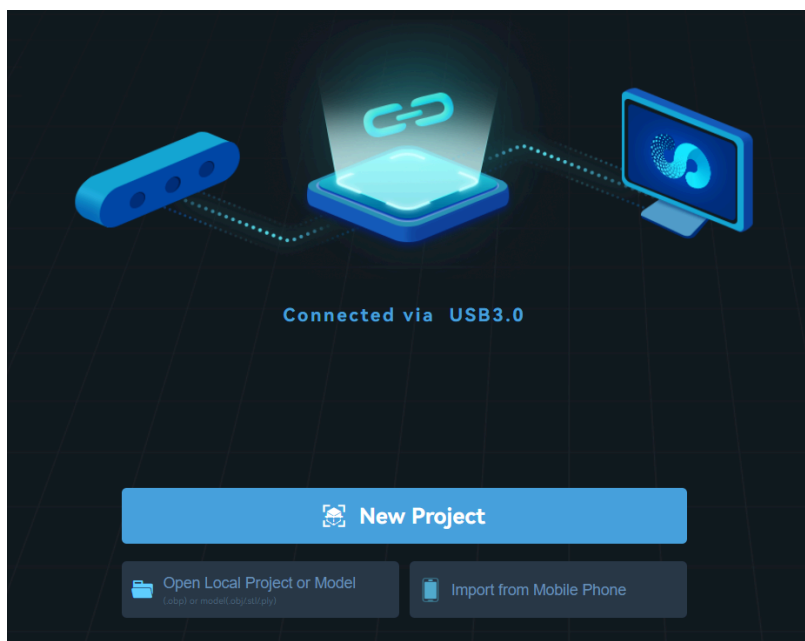
Creality Otter Lite is a high-precision, handheld, all-in-one 3D scanner compatible with scanning small, medium and large objects, with a maximum accuracy of 0.05mm. From small screws to large human bodies and large automotive parts ( $20\text{mm}^3 \sim 2000\text{mm}^3$ ), it can effortlessly scan objects of various size. The ability to adapt objects of various sizes is achieved by its innovative four-eye stereoscopic vision design. This includes a set of long focal length binoculars and a set of short focus length binoculars. The former is used to capture the details of small objects at close range; the latter has a larger FOV and is used to scan medium and large objects, to ensure stable tracking with minimal loss.

This scanner is equipped with a depth computing specialized chip independently developed by us, which ensures smooth scanning with a maximum frame rate of up to 30fps. Using unique single-frame 3D imaging technology, it has excellent anti-shake performance. Advanced DOE structured light projection technology enables 3D scanning even outdoors ( $\leq 30,000$  lux). With professional-grade texture fill light, it can smoothly complete full-color scans even in low light environments, and give objects exquisite and realistic textures.

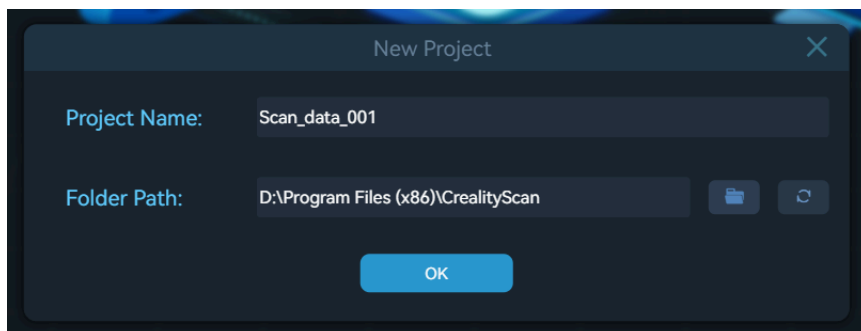
In addition, Otter Lite has a built-in wireless Wi-Fi module, and when used with the battery handle Lite Bridge, scanning can be freed from the constraints of cables. When scanning wirelessly, a mobile phone can be used as the scanner screen, making the scanning process easier and more convenient.

## Create a new scan project

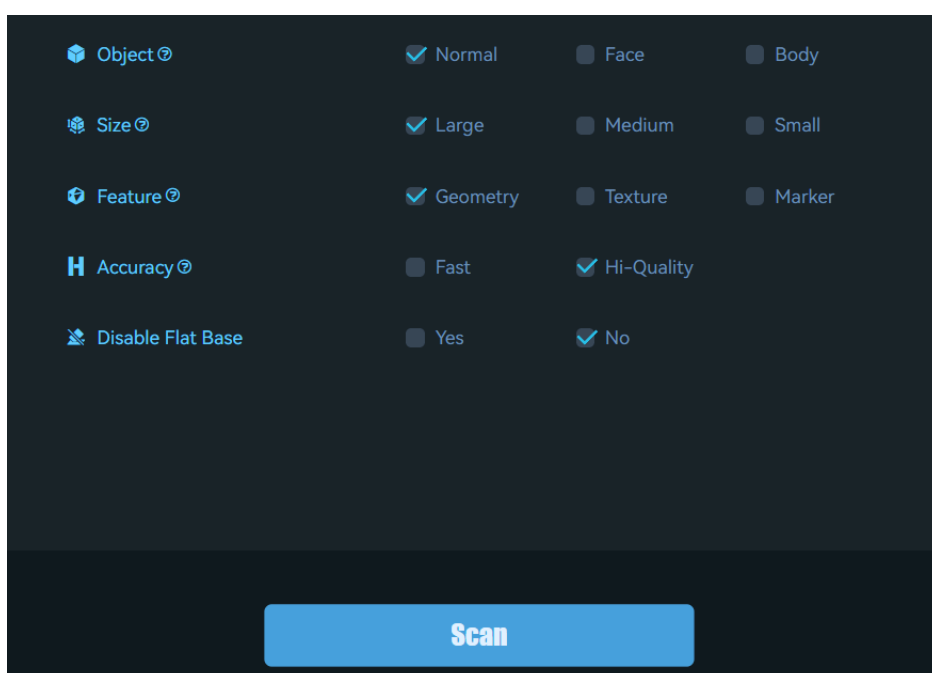
1. Connect the device and open the installed Creality Scan software.
2. In Creality Scan, Click "New Project", as shown below.



3. Enter the project name in the pop-up bar, select the folder path, and then click the "OK" button, as shown below:

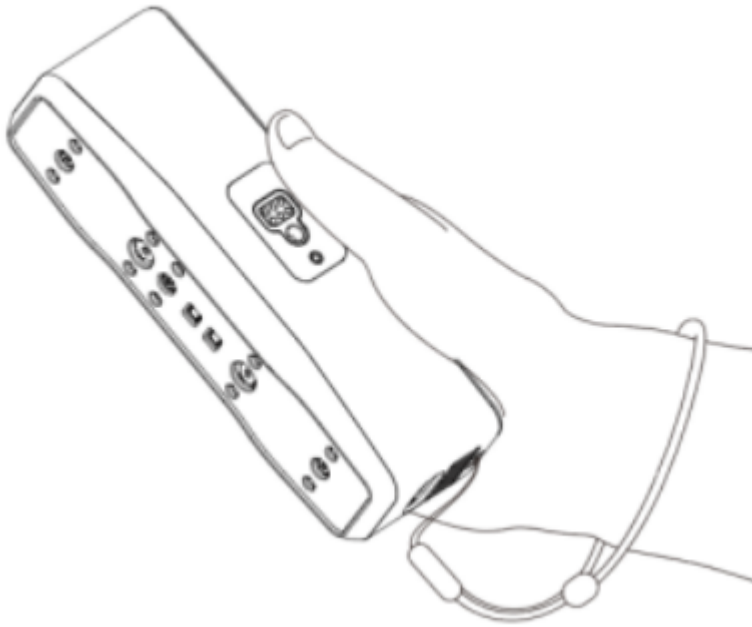


4. Enter the "Project Name", select the "Folder Path", and select the scanning mode and related configuration items according to the characteristics of the scan object. Finally, click the "Scan" button to enter the scan preview interface, as shown below:

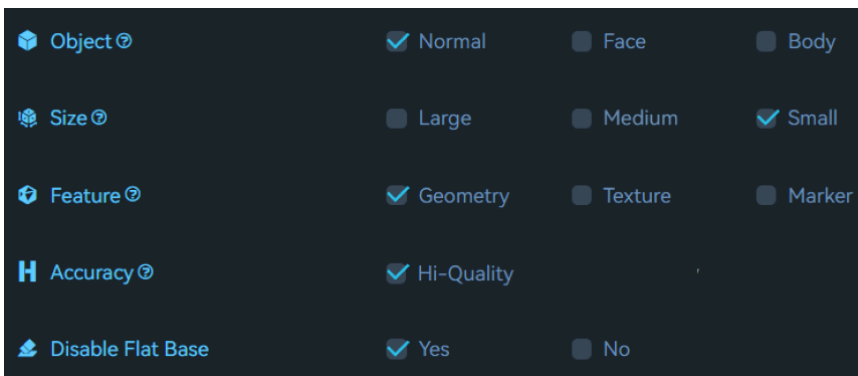


### Scanning steps (taking the test piece as an example)

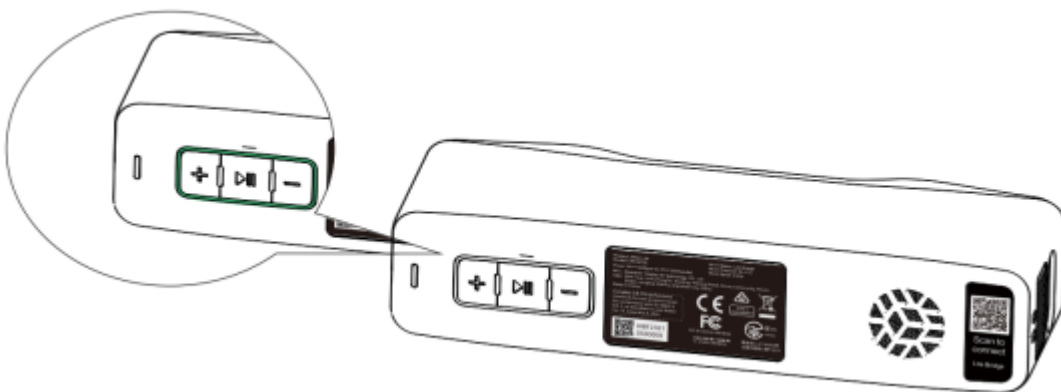
1. Note: During handheld scanning, to prevent the scanner from slipping out of your hand and causing damage to the scanner, you can fix one end of the free lanyard to the scanner and put the other end around your wrist, as shown in the figure.



2. Launch the installed Creality Scan software can scan the test piece (owl) included in the package for the first scanning experience. The scanning parameters are configured as shown in the figure below:



3. Ensure that the scanning environment is clean and open, and adjust the scanner and the scanned test piece to an appropriate distance. That is, when the scanner indicator light is green, or the distance indicator bar on the software interface is at the optimal (green) position, it indicates that the scanning distance is optimal.

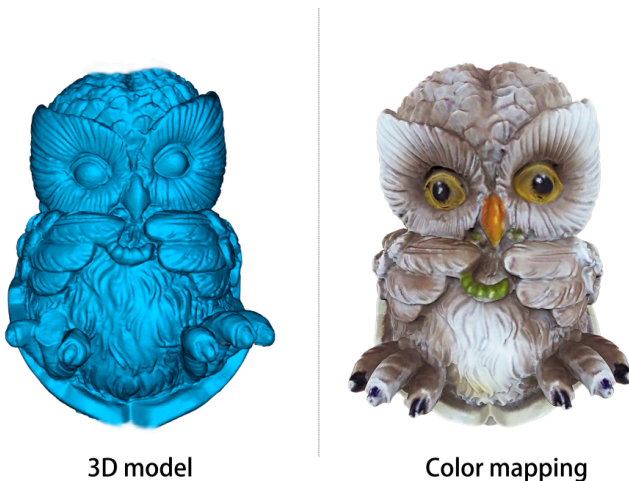


4. Short press on the scanner , or click "Start Scan" on the software interface to start scanning. Move the scanner slowly and try to keep the test piece in the center of the software preview window. Continue scanning until the model color turns green .



5. When a part of the scan is completed, you can click to pause, change the model angle and click Continue Scan. The scan will be completed if it takes more than 2 seconds or you click "Complete Scan" on the software.

6. Data processing: Perform data processing (one-click processing/step-by-step processing) in the CREALITY Scan software to obtain a complete 3D model (the point pitch is recommended to be set to 0.1mm ). The effect is as follows:



3D model

Color mapping

Note: To view tutorials on scanning and processing different objects, please check: [Tutorials for CREALITY Scan Software | CREALITY Wiki](#)